

Year 2 Knowledge Map -Advent 1

How many of these definitions can you learn?


Science

Seasonal changes

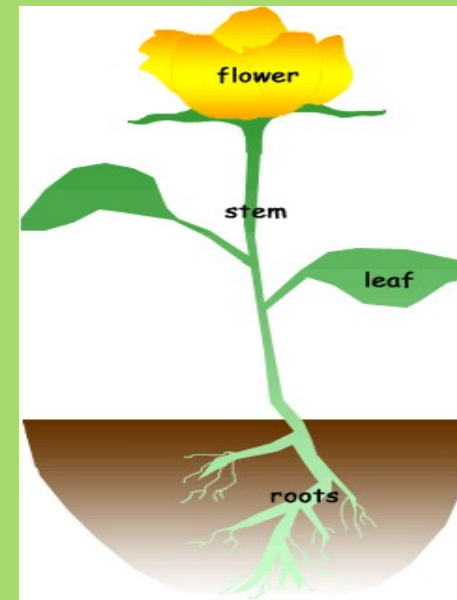
Plants and Trees

Year 2 P.E days are on a Monday and Thursday each week. Please wear a warm P.E kit to school on these days e.g. warm trousers, top and jumper.

Thank you

Subject Specific Vocabulary		Sticky Knowledge about seasonal change
Autumn	The time of year between September and November. Many leaves fall off the trees.	
Spring	The time of year between March and May. There is usually lots of signs of new growth in Spring.	
Summer	The hottest season in the UK. It happens between June and August. The longest day is June 21 st .	
Winter	The coldest season in the UK. Usually have snow in this season. Occurs between December and February.	
fall	The name given to the Autumn season by Americans. It is because so many leaves fall off the trees.	
weather	Weather is what the sky and the air outside are like, such as cold and cloudy.	
temperature	It is a degree of hotness or coldness that can be measured using a thermometer.	
thermometer	This is the instrument that measures the temperature.	
weather symbol 	These are signs used by to help us understand more about our daily weather.	
deciduous	Deciduous trees are trees that shed their leaves once a year, usually during the season of autumn.	
coniferous	Most conifers are evergreens, or trees that keep their leaves year-round.	

Can you learn the names of the key parts of a plant?



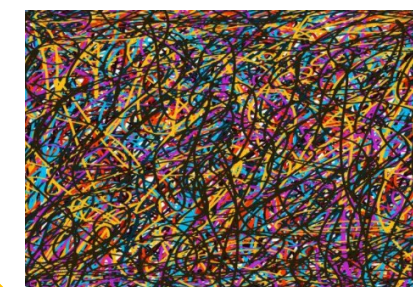
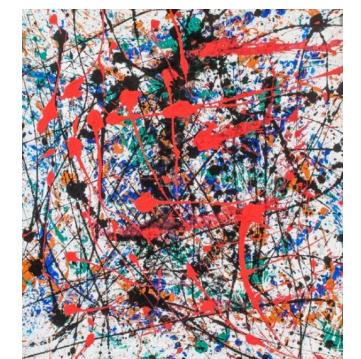
Can you learn these 3 common wild plants?



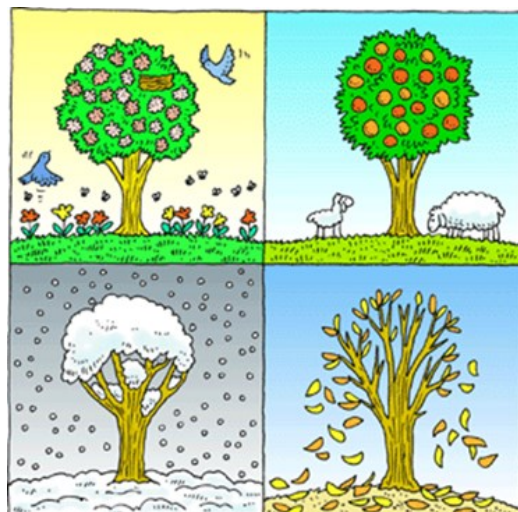
Art—Jackson Pollock

He was an American artist. He was famous for using a range of colours and emotions in his work. His paintings were non-representational, meaning they did not look like anything. He listened to music as he created his artwork.

Do you like any of his paintings below? What colours did he use?



Watch a video about the four seasons! Which season are we in? How do you know?

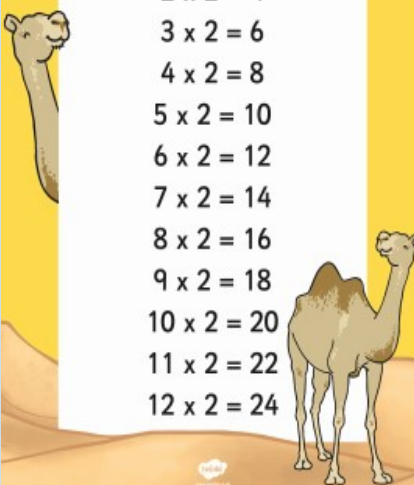


Maths

Can you learn the 2, 5 and 10 times tables? Can you say them in and out of sequence?

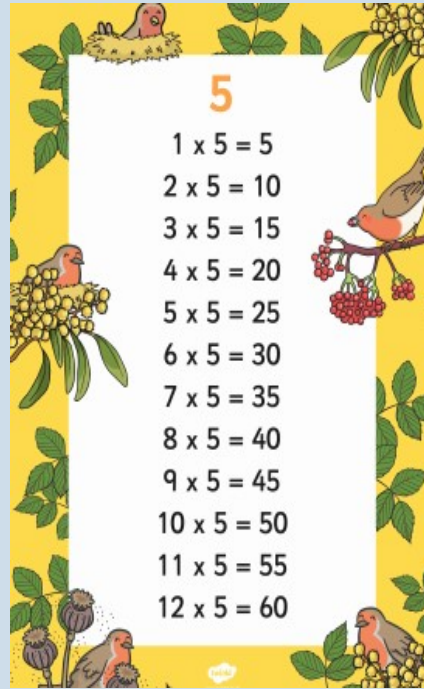
2

1 x 2 = 2
2 x 2 = 4
3 x 2 = 6
4 x 2 = 8
5 x 2 = 10
6 x 2 = 12
7 x 2 = 14
8 x 2 = 16
9 x 2 = 18
10 x 2 = 20
11 x 2 = 22
12 x 2 = 24



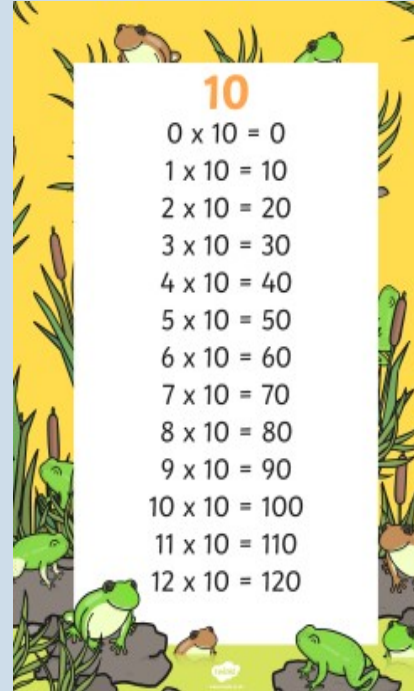
5

1 x 5 = 5
2 x 5 = 10
3 x 5 = 15
4 x 5 = 20
5 x 5 = 25
6 x 5 = 30
7 x 5 = 35
8 x 5 = 40
9 x 5 = 45
10 x 5 = 50
11 x 5 = 55
12 x 5 = 60



10

0 x 10 = 0
1 x 10 = 10
2 x 10 = 20
3 x 10 = 30
4 x 10 = 40
5 x 10 = 50
6 x 10 = 60
7 x 10 = 70
8 x 10 = 80
9 x 10 = 90
10 x 10 = 100
11 x 10 = 110
12 x 10 = 120



$20 + 0 = 20$	$13 + 7 = 20$	$6 + 14 = 20$
$19 + 1 = 20$	$12 + 8 = 20$	$5 + 15 = 20$
$18 + 2 = 20$	$11 + 9 = 20$	$4 + 16 = 20$
$17 + 3 = 20$	$10 + 10 = 20$	$3 + 17 = 20$
$16 + 4 = 20$	$9 + 11 = 20$	$2 + 18 = 20$
$15 + 5 = 20$	$8 + 12 = 20$	$1 + 19 = 20$
$14 + 6 = 20$	$7 + 13 = 20$	

Number bonds are pairs of numbers that make up a given number.

Can you learn the number bonds to 20?

Hit the Button maths game



Reading

How many books can you read at home?

Try and read a variety of fiction and non-fiction books.



Reading Vipers

Vocabulary
Infer
Predict
Explain
Retrieve
Sequence or Summarise



From now on please do **not** bring in sweets or cakes for your children to share.
Thank you

Please make sure your child has a water bottle in school. It will stay in school and will be cleaned by staff at the end of each day.



Spelling

Practise spelling these words at home. See how many you can learn off by heart!

the	his	go	ask
a	has	so	friend
do	I	by	school
to	you	my	put
today	your	here	push
of	they	there	pull
said	be	where	full
says	he	love	house
are	me	come	our
were	she	some	
was	we	one	
is	no	once	

School Prayer

Dear God,

Thank you for looking after our school.
Thank you that you love each and everyone of us here.

Help us to learn, play and share together,
So that the wonderful world you have made
Becomes more beautiful everyday.

Amen.

